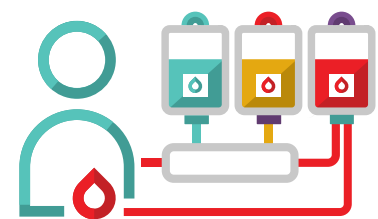


3 Ways To Donate Stem Cells



PERIPHERAL BLOOD STEM CELLS (PBSC)

Procedure Time: 4-6 hours.

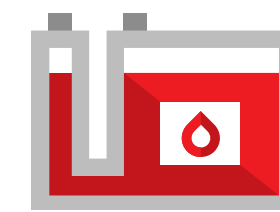
Most often PBSCs are collected through a non-surgical process similar to donating blood called apheresis. Stem cells are separated from the blood and collected.



BONE MARROW

Procedure Time: 45-90 mins.

Less often bone marrow stem cells are collected from the back of the donor's pelvic bones through a surgical procedure performed under general anesthetic.



UMBILICAL CORD BLOOD

Procedure Time: Immediate*.

Cord blood is the leftover blood in the umbilical cord and placenta after a baby is born. It is usually thrown away as medical waste, but contains rich, lifesaving stem cells.

* Your cord blood donation is collected after the safe delivery of the baby. It does not interfere with your birth plans, including delayed cord blood clamping.

PEOPLE DONATE PBSC VS. BONE MARROW

90% PERIPHERAL BLOOD STEM CELLS (PBSC)

VS.

10% BONE MARROW

More than 75% of patients must rely on a volunteer donor found on a **stem cell** registry. You could be the one.

Join our stem cell registry visit blood.ca/stemcells

